

WOOD

Definition, finish and resistance. Winkles quality.



Diameter available
1,75mm

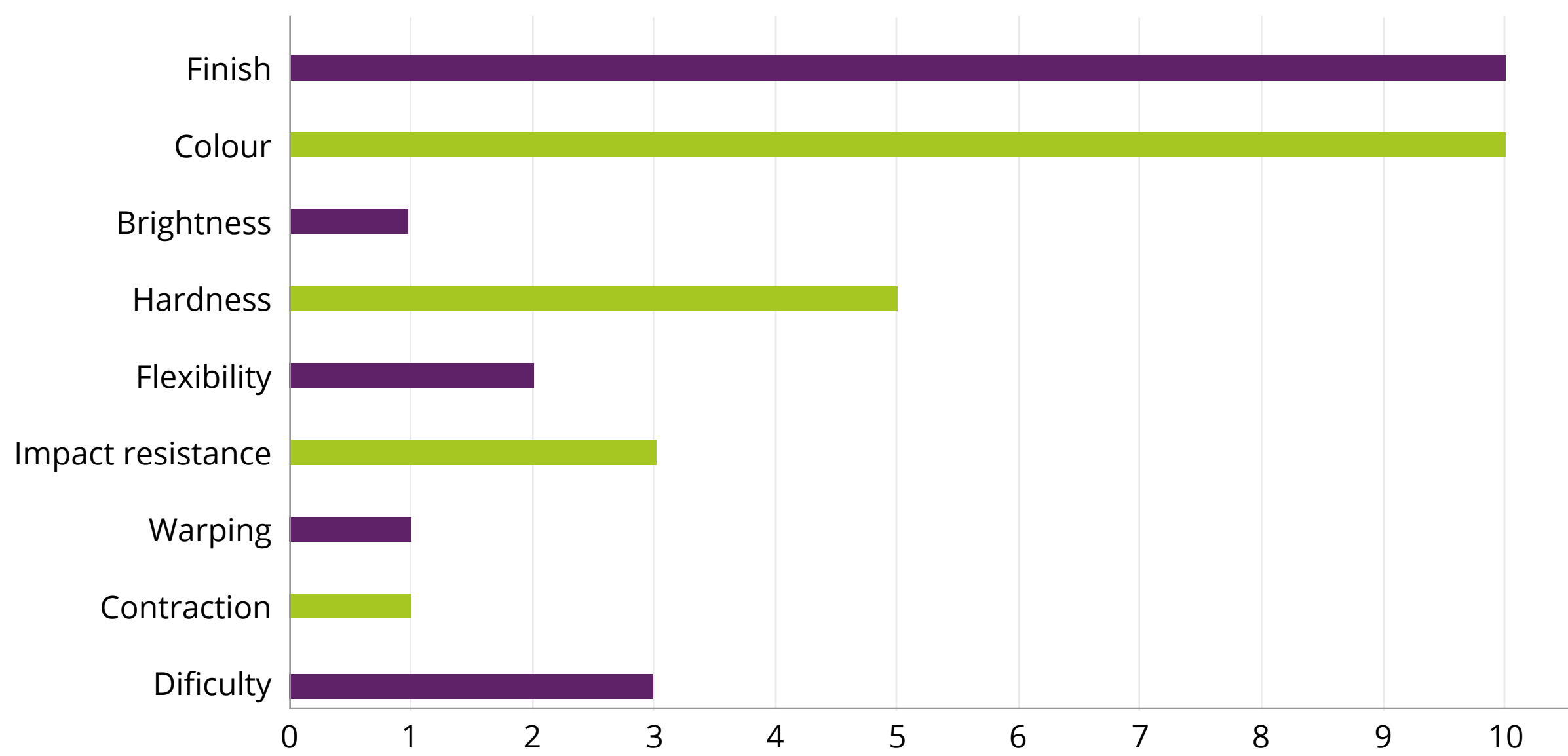
Spool size
300g y 750g

PRINTING PARAMETERS

Nozzle temperature:
Between 190°C and 220°C

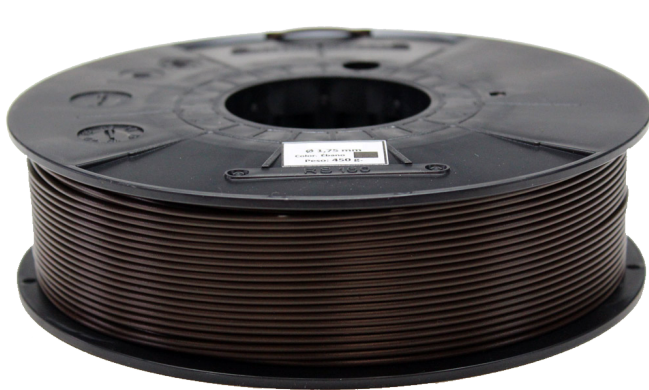
Bed temperature:
Between 50°C and 60°C

Excellent bed adhesion
between coats

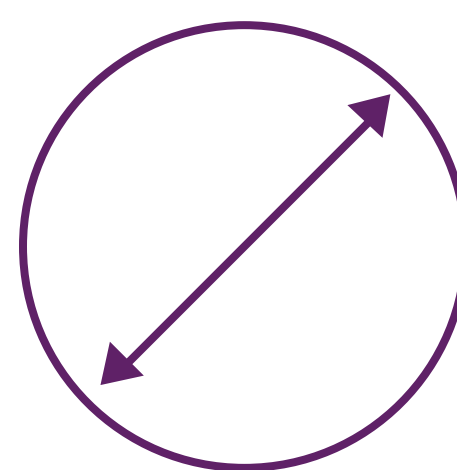


⚠️ PRINT IN A VENTILATED PLACE

WINKLE WOOD FILAMENT QUALITY GUARANTEES



Winding improvement



Constant diameter

∅ 1,75 mm
± 0,05 mm



Cardboard box, vacuum and silica

* The indicated parameters are valid for correctly calibrated printers (PyD, mechanical and fuser).

* Supervised and tested manufacturing process (diameter, color and winding) to guarantee the quality of our product.